



WORLD LEADER IN
MARINE FIRE SUPPRESSION TECHNOLOGY

YOUR ONBOARD SAFE CHOICE

ENGINE SHUTDOWN RESTART SYSTEM (ESRS)

SEA-FIRE ESRS new generation microprocessor shutdown systems offer improved functionality and flexibility, easy installation and CAT5 plug and play connections.

This new generation ESRS shutdown system takes advantage of microprocessor technology to improve the functionality and flexibility of the traditional ESRS. Attention has been focused on producing a unit that is quick and simple to install. The new display panel is a plug and play connection via a CAT5 cable. All ESRS models comply with ISO marine 8846 and meet CE approval standards.

Features

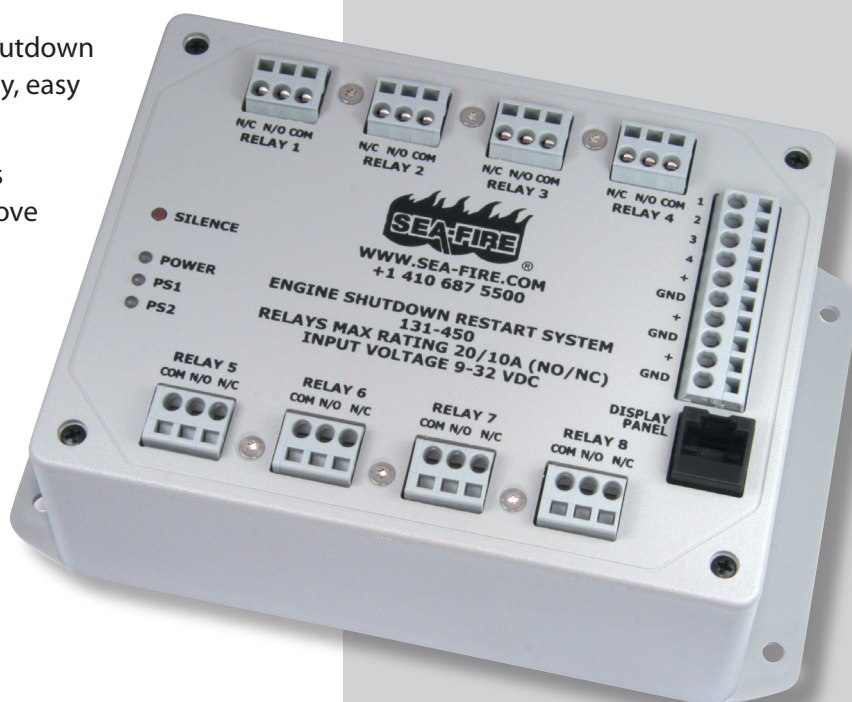
- Operating voltage between 9-31 VDC
- Available in 4, 6 or 8 relay units
- Plug and play to multiple display panels
- 2 x Pressure switch inputs
- Fast installation with spring cage connectors

Models

- 131-440: 4 Shutdown Relays
- 131-445: 6 Shutdown Relays
- 131-450: 8 Shutdown Relays

Specifications

RoHS Compliant
CE Compliant
Operating Voltage – 3 x diode protected inputs 9 – 32 vdc
Power consumption – 350mA with 8 relays energised (standby mode)
Pressure Switch – 2 x Normally closed inputs
Internal Buzzer – 85db @10cm
Enclosure Material – Grey flame retardant ABS
Display Connection – CAT5
Relays – 5vdc Form C NO 20A/NC 10A
Connectors – Wago 739 Max wire size 12AWG/2.5mm
Enclosure Dimensions – 7.25 x 4.5 x 3in (184x114x76mm)



Visit our website

WWW.SEA-FIRE.CO.UK



REGISTRATION NUMBER 185575



YOUR ONBOARD SAFE CHOICE

WORLD LEADER IN MARINE FIRE SUPPRESSION TECHNOLOGY

Round Monitor Panels

- 131-461** System Monitor with Discharge Indication
- 131-463** System Monitor with Discharge Indication and High Temperature Zone
- 131-465** System Monitor with Discharge Indication and Auxiliary Zone
- 131-467** System Monitor with Discharge Indication and Low Pressure Zone. Used with 'H' Series engineered systems

Panel mounted displays give both a visual and audible alarm in the event of extinguisher discharge or low cylinder pressure.

The monitor panels have dimmable LED's and silence and reset buttons to enable the machinery to be restarted after shutdown.

All displays are available in rectangular or round panels.

All displays comply with ISO Marine 8846 and meet CE approval.



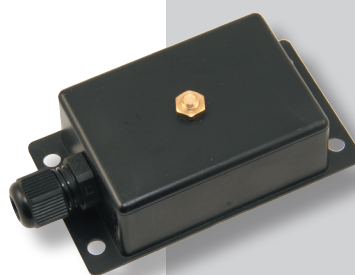
Specifications for ESRS displays

RoHS Compliant
CE Compliant
Operating Voltage – 5vdc
Buzzer – 85db @10cm
Enclosure Material – UV stable ABS
Dimensions - 2.44in (62mm) dia overall; 2in (51mm) dia cut out
Display Connection – 2 x parallel RJ45 sockets
Fixing Kit –
Stud: M4 x 40mm A4 stainless
Nut: M4 A4 stainless
Washer: M4 A4 shake proof washer
Bracket: Aluminium

131-304 Heat Sensor Assembly with Enclosure - 140°F (60°C)

Used in conjunction with 131-463

Sea-Fire's new Heat Sensor alerts boat owners to dangerously high engine room temperatures. The enclosed model is designed to be mounted throughout the engine room compartment and set at 140°F (60°C), which is 35°F (19°C) lower than the system discharge temperature of 175°F (79°C).



Sea-Fire Europe Ltd
Unit D2 Discovery
Voyager Park
Portfield Road
Portsmouth
PO3 5FN
UK

Tel: +44(0) 2392 679666
Fax: +44(0) 2392 667014
eurosales@sea-fire.com

Visit our website

WWW.SEA-FIRE.CO.UK