

FIRETRACE[®] LTD

AUTOMATIC FIRE SUPPRESSION SYSTEMS



Firetrace[®] Bus Systems

UNECE R107 Approved System available

STOP FIRES WHERE THEY START



About Firetrace®

Firetrace® Limited is a family owned UK manufacturer of automatic fire suppression systems.

The business was started by Dave Melton who pioneered the use of linear detection tubing.

Since 1996, Firetrace® have manufactured more than 100,000 systems with numerous success stories where fires have been extinguished.

There are 8,000 UK buses protected with Firetrace® systems.

Firetrace® provide Design, Manufacture, Installation and Servicing.

We also offer full product training.

All aspects are covered by our ISO 9001:2015 quality system.

Firetrace® is a self seeking suppression system which automatically detects and suppresses the fire at source. This is achieved by the Firetrace® detection tubing being routed through the risk area offering protection along its entire length.

This detection tubing is designed to rupture at 110°C discharging the suppressing agent at the point of fire.



Email

email: info@firetrace.co.uk
Phone: 01473 744090



Website

We Offer.....

- » On-Site Surveys
- » Free No Obligation Quotations
- » Full System Design
- » Installation and Maintenance
- » Excellent Customer Support
- » Free Training on our Products
- » Systems Built to ISO9001:2015 Quality System
- » Systems which are Fully PED and TPED Compliant
- » Email and telephone technical support

Firetrace® can offer bespoke systems to protect.....

- » Electrical Cabinets and Switchgear
- » Data Cabinets
- » Commercial and Domestic Cooking Areas
- » Fume Cupboards
- » Fork Lift Trucks
- » Dockside Machinery
- » Small and Large Plant and Machines
- » Wind Turbines
- » Buses
- » CNC and EDM Machines
- » Mobility Specification Vehicles
- » Many, many more.....

STOP FIRES WHERE THEY START



Firetrace[®] Direct System

Our standard Direct system uses the trace detection tubing to detect a fire and deliver the suppressing agent to the heart of the fire.

The detection tubing is routed throughout the engine bay, avoiding extremely hot spots i.e. turbo, to provide maximum cover of the risk area. This provides a quick and accurate detection and delivery in the event of an activation.



Our Direct Twin head system has all the benefits of the single tubing Direct system, but with the added bonus of protecting adjacent areas.

The trace tubing will deliver the suppressing agent wherever it bursts allowing all the agent to be discharged on to the fire where it is needed, and not wasted in other areas.



STOP FIRES WHERE THEY START



UNECE R107 Approved System

The Firetrace[®] Indirect Low Pressure Hi-Throughput Bi-Directional System is fully compliant with UNECE Regulation R107. It is designed for local applications within vehicle engine areas using ABC Dry Powder. In addition to the main engine compartment, the system can also be extended to cover adjacent battery/heater compartments.

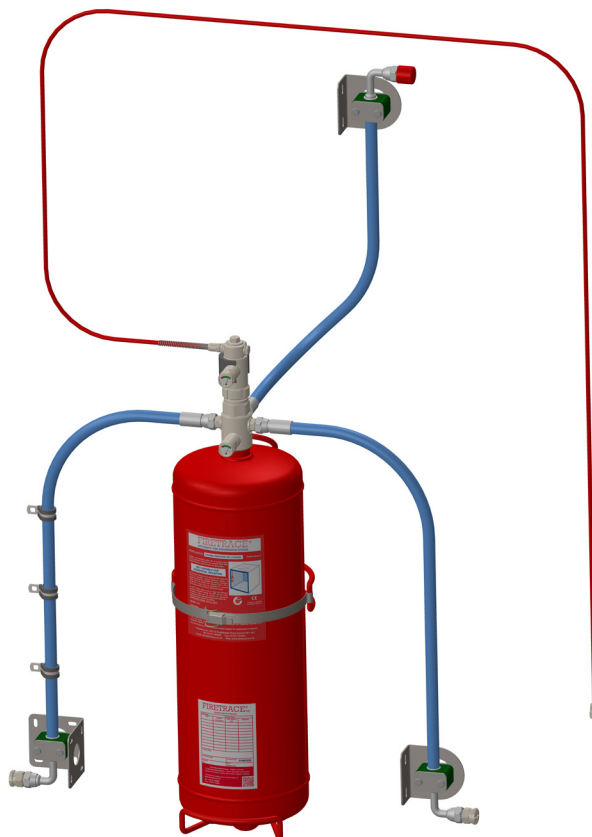
The system uses our linear heat detection tubing that can detect a fire, or a temperature above 120°C, along its entire length ensuring fast and accurate detection in the risk areas. In addition to the discharge nozzles, the Firetrace[®] system uses patented “Bi-Directional” technology. This unique function provides the ability to protect small or concealed areas without the need for additional diffusers and pipe work.

The Firetrace[®] system is designed to cover all principle risk areas within the engine compartment and the discharge diffusers placement ensures the suppressing agent is deployed over all identified hazards. The additional benefit of deployment from the tube burst, means that all areas are covered even if they were not initially identified as a primary risk.

The Firetrace[®] system operates pneumatically and does not require energy from the vehicle to operate. The system can be supplied with a VMMS (vehicle multi-messaging system) that provides the driver with audible indications of the system status, as well as notifications of discharge or fault.

For vehicles fitted with on-board wifi for customers, we can send notification via text and email back to the workshop/depot/transport manager in the event of fault or discharge.

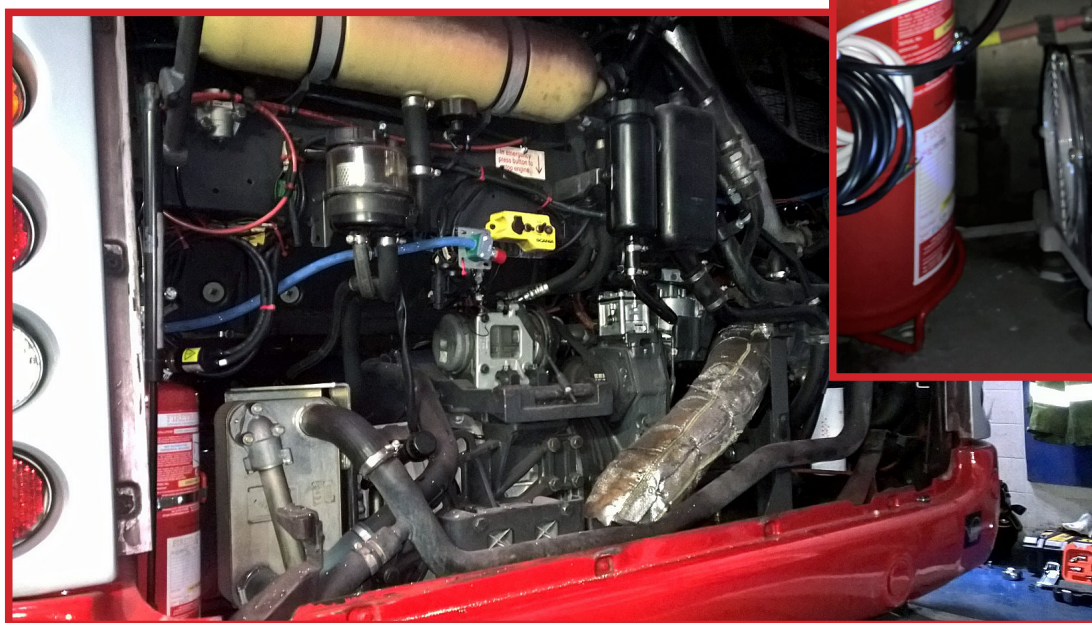
Typical layout of the Firetrace[®]
R107 Systems.



STOP FIRES WHERE THEY START



R107 System Installation



STOP FIRES WHERE THEY START



Firetrace EV Systems

The New Firetrace[®] EV System is the latest addition to our self seeking suppression system range which automatically detects and suppresses the fire at source. This is achieved by the Firetrace[®] detection tubing being routed through the risk area offering protection along its entire length. This detection tubing is designed to rupture at 120°C discharging the suppressing agent at the point of fire and via plumbed diffusers.

The 4kg Bi-directional Novec system has some unique attributes:

- Automatic fire suppression designed specifically for EV's.
- Non compacting liquid agent unaffected by vibration.
- Using 3M Novec 1230 extinguishant that will not conduct electricity or harm electrical components.
- Operates fully pneumatically without the need for any external power or batteries.
- Uses proven linear detection tubing (already utilised on over 10,000 city buses).
- Able to deploy agent in areas up to 20 Metres away from the cylinder.
- Deploys agent from diffusers and directly from the detection tubing.
- Can be fully monitored with dedicated outputs available to indicate: discharge, fault or isolation.
- Up to 10 Year cylinder life.
- Extinguishant is non-toxic & environmentally friendly.

The same technology can be used to protect associated vehicle charging stations and other electrical infrastructure.

Firetrace[®] systems can be retrofitted to most applications and, in some cases, multiple compartments can be protected with a single systems. If you would like to discuss your application please contact the Firetrace[®] team.

**Typical Layout of the New
Firetrace[®] EV system Layout**



STOP FIRES WHERE THEY START



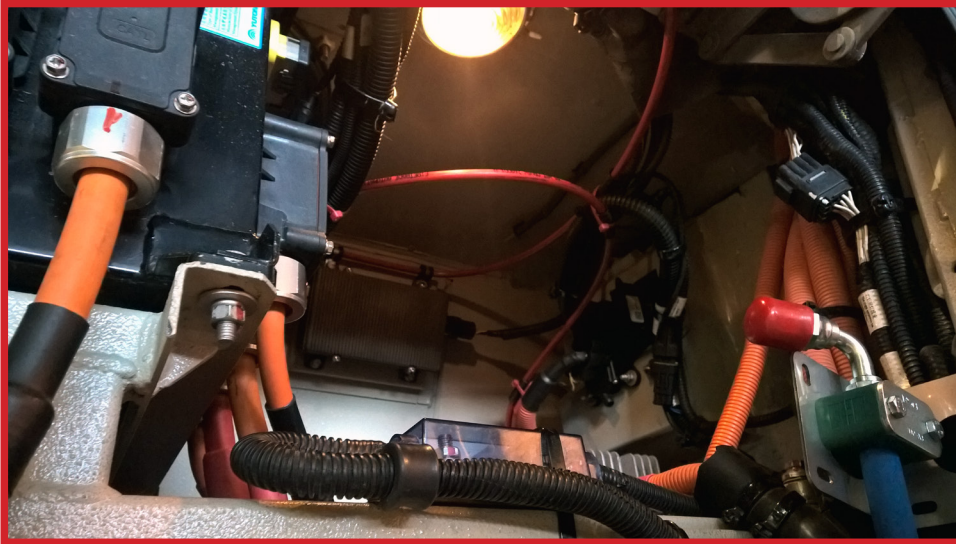
FIRETRACE[®]

®

LTD

AUTOMATIC FIRE SUPPRESSION SYSTEMS

EV System Installation



STOP FIRES WHERE THEY START



FIRETRACE[®]

LTD

AUTOMATIC FIRE SUPPRESSION SYSTEMS



info@firetrace.co.uk
01473 744090
www.firetrace.co.uk

**Unit 22, Knightsdale Road
Ipswich, Suffolk
IP1 4JJ**

**All systems CE marked
and fully PED compliant**



STOP FIRES WHERE THEY START

